

Trumpet 1 in B Flat

JEAN FORTIN
283 JACQUES CARTIER SUD
ST-JEAN, QUE., 347-4595

CHICAGO CHAMBER BRASS SERIES

GERSHWIN

Arr. Lube / CCB

Bess, You Is My Woman Now

5-56

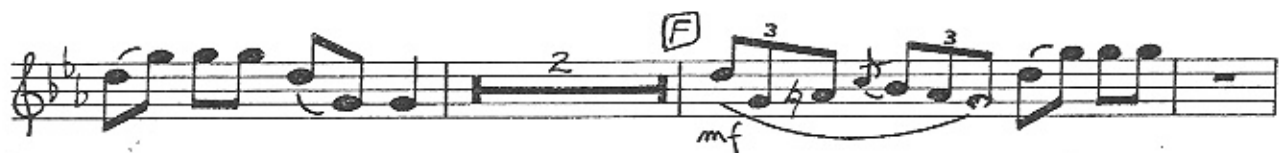
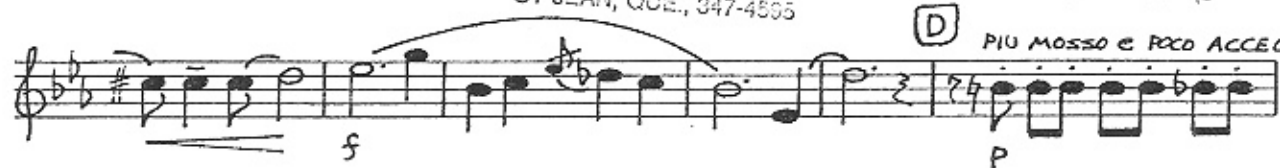
ANDANTE
STRAIGHT MUTE
mp
POCO RIT.
mf
A TEMPO
3
3
MUTE OUT 2
RIT.
mf
A TEMPO
RUBATO
5
A TEMPO
P
mf
B
mp
P
5
C
CRES.
3
3
ff
mf
P

JEAN FORTIN
283 JACQUES CARTIER SUD
ST-JEAN, QUE., 347-4555

5-56

D

PIU MOSSO E POLO ACCEL.



ALL RIGHTS RESERVED

Copyright © 1935 by Gershwin Publishing Corp.
Copyright Renewed, Assigned to Chappell & Co., Inc.
This Arrangement, Copyright © 1981 by Chappell & Co., Inc.
Published by and available through Chamber Brass Library
P. O. Box 546, Morton Grove, IL 60053 USED BY PERMISSION

International Copyright Secured